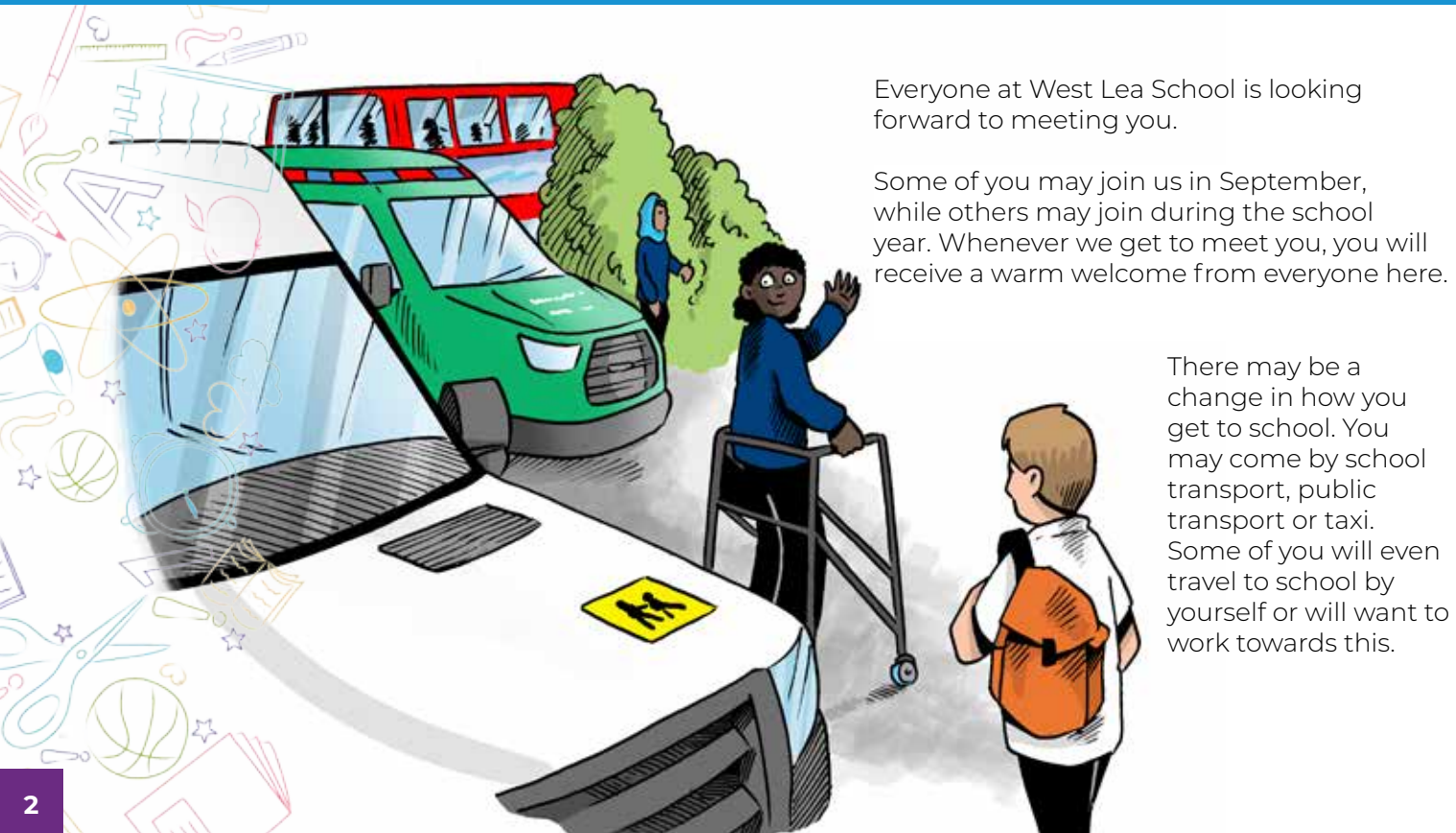


# Welcome to the Learning for Life Campus at West Lea School



# How will you help me settle in to the Learning for Life Campus?



Everyone at West Lea School is looking forward to meeting you.

Some of you may join us in September, while others may join during the school year. Whenever we get to meet you, you will receive a warm welcome from everyone here.

There may be a change in how you get to school. You may come by school transport, public transport or taxi. Some of you will even travel to school by yourself or will want to work towards this.

Our travel trainers will give you lots of help with this and build up your confidence so you feel ready to make the journey to school without a helper.

You will have some settling-in sessions before you join us. We will show you where everything is and you will feel at home very soon.



You will get to meet your new teachers so that they can learn all about you. They will find out what you are good at, what you love doing and what you might need help with.



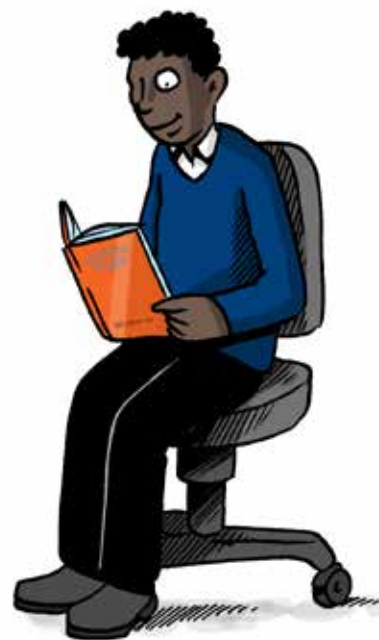
# What will I do in lessons?



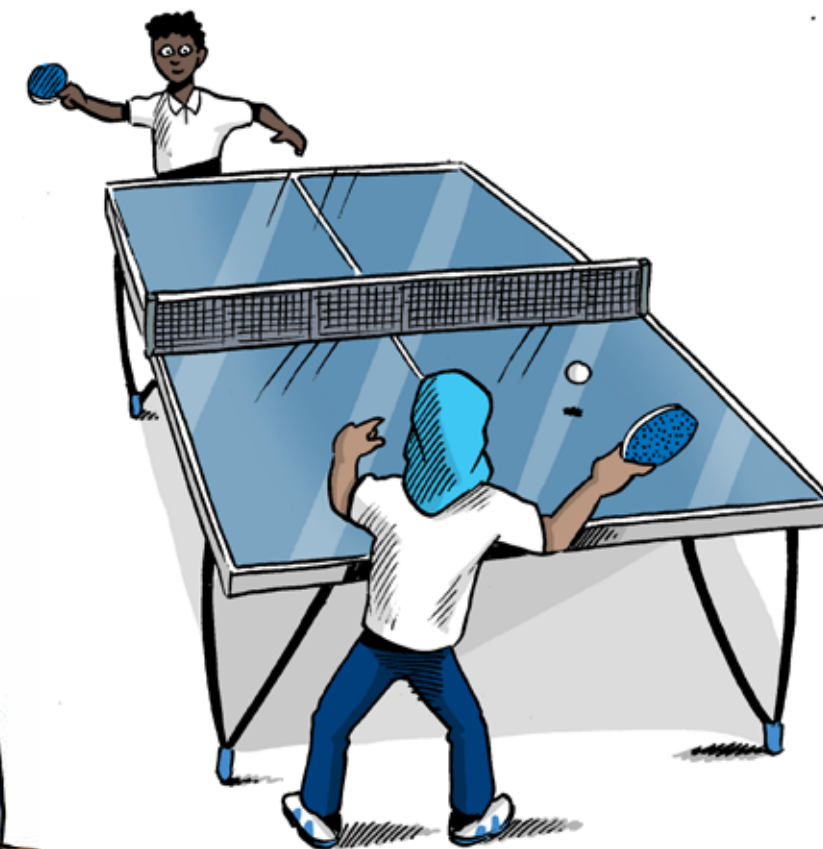
You will be in a small class with other students supported by your Teacher and two Teaching Assistants.

You will be given a timetable which includes lessons in English, Maths, Reading, PSHE, Life and Work, Creative, RE and PE.

Your class team will work hard to support you with any learning or physical needs that you have and are always available to answer any questions or discuss any worries you may have.



In lessons you will learn and develop a range of skills which will help you become more independent both now and in the future. These skills include staying safe, using money and developing skills to travel on public transport.



You will take part in PE lessons at a range of venues and will also participate in activities and trips to develop your social and communication skills which will be useful now and in the future.

## What else will I do?



At the Learning for Life Campus the focus is on developing your independence and teaching you all the skills you need for the future.

You will get the chance to experience going to College to try out different courses, and you will undertake a Work Experience placement to experience working in a work place.

During your Life and Work lessons you will learn about skills for work, healthy living and cooking, first aid, careers and travelling independently.

You will also get the chance to go on educational trips linked to topics you are studying in class. and you will have a residential trip in the Summer Term in Year 10 and Year 11.

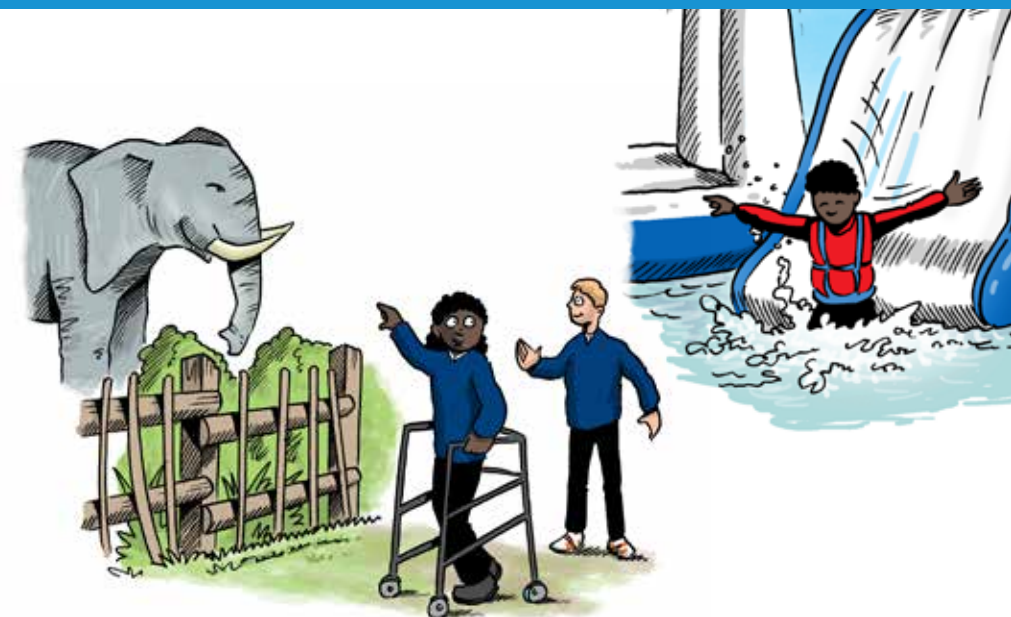
There are many sports events and competitions to participate in including Football, Panathlon and Swimming Competitions.

We also have many different clubs available to participate in including Dance, Drama, Games, Choir, Craft and Football.

## What if my family or I need help?

Any worries or concerns should be discussed with your class teacher or a member of the Leadership Team as soon as possible so we can deal with any problems that arise quickly.

We are very fortunate at West Lea to have a range of specialist staff who can support students and their families with problems they may be experiencing. This includes a Parent Support Worker, Speech and Language Therapist, Art Therapist, Occupational Therapist, Physiotherapist and Clinical Psychologist.



## What happens when I have done well?

We love to see our students doing well. When you have tried hard, produced some really good work, achieved a high level of school attendance or been kind to others, we will reward you and let your families know. We have a range of different rewards students can earn including certificates, trips and invitations to special events such as cinema afternoons and tea with the Head of School.



# We can't wait to see you at West Lea School's Learning for Life Campus!



**Find us and get in touch:**

Learning for Life Campus,  
Broomfield School,  
Wilmer Way,  
N14 7HY

**Telephone:** 020 8807 2656

**Email:** [office@westleaschool.co.uk](mailto:office@westleaschool.co.uk)

**Website:** [westleaschool.co.uk/learning-for-life-campus](http://westleaschool.co.uk/learning-for-life-campus)



Devised and produced by Stoneworks Education Ltd [www.stoneworkscommunications.co.uk/Education](http://www.stoneworkscommunications.co.uk/Education)