

Campus Update

Drama is one subject that forms part of our school Creative Curriculum domain.

At Learning for Life, it also features in our campus enrichment programme with a weekly afterschool Drama club run by the fabulous Mrs Harnett and her team of Mrs Whitear and Ms Norman.

Our Year 10 Drama club are busily rehearsing for a performance of Twelfth Night in the Coram Shakespeare Schools Festival at Finchley's Arts Depot on Wednesday 22nd February 2023.

All areas of learning are interlinked, as learners draw on knowledge and skills across domains when applying learning tasks and opportunities. As well as in Drama, Shakespeare also features in our English Curriculum at Key Stage 4 and this week some of our learners attended a performance of Romeo and Juliet at The Dugdale Centre in Enfield.

The show was performed on a round stage which is similar to how Shakespeare's plays would have originally been shown. This made it very interactive for the audience.

The production was a spin on the original play. The actors explained the themes and meaning of the sonnets and monologues to the audience which included love, conflict and family.

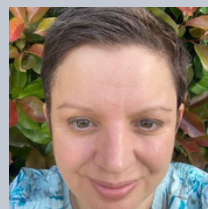


At the end of the production, the actors came back on the stage for a Q&A session. Learners had the opportunity to ask the actors questions about Shakespeare or more broadly, about becoming an actor.

Safeguarding

Sometimes incidents can occur at home which the school may be unaware of. These could include accidents, illness or mental health crisis situations within the family, incidents in the local area where the Police are called or concerns about safety in your local area.

Please inform your child's Head of School or a member of the Safeguarding Team if there is any type of incident so we can support you and your family and ensure appropriate support is given to your child when they arrive at school.



CATH GOODWIN
Head of School



Events and key dates

WEDNESDAY 1ST FEBRUARY

Meridian, Haselbury and Learning for Life -
Closed to Learners

MONDAY 13TH TO FRIDAY 17TH FEBRUARY

Half Term - School Closed to Learners

FRIDAY 10TH FEBRUARY

Last day of Spring Term 1

MONDAY 20TH FEBRUARY

School Reopens to Learners - Spring Term 2

