

Newsletter

July 2024



Welcome



Dear Parents and Carers,

A very warm welcome to the final newsletter of the 2023-24 academic year.

As we look back across the year there have been many milestones and accomplishments. Following on from our Ofsted inspection in May 2023, we've not sat still! In September 2023, we started work on a 3-year plan to further develop our school. Our plans are designed to bring us ever closer to our ambition of being an 'extraordinary' school – where everyone can flourish. Our key achievements are on pages 4-5.

Our work beyond the school is of equal importance. We've continued to partner with other schools, charities and businesses to advance our mission. The Enterprise Cooperative Trust (ECT) and Learning for Life Charity (LFLC) have continued to grow and develop - adding value to our school and the wider community. Our community highlights are on pages 14-15.

Finally, I would like to thank the wonderful staff at West Lea, for all they have done and continue to do in support of our mission, each other and, of course, our pupils and families. And to you, our parents and carers, thank you for your ongoing support and encouragement. We are truly grateful for the trust you give us, which is something we never take for granted. Wishing you all a restful and enjoyable summer break.

We look forward to seeing you in September.

With all good wishes,

PAUL QUINN
CEO



In this edition

Welcome	2
Continuing the path to extraordinary	4
Meridian Campus	6
Haselbury Campus	8
Learning for Life Campus	10
Horizon Campus	12
2023-24 Community news roundup	14
Pastoral update	16
Our campuses	18
Key term dates	19



West Lea School
Haselbury Road, Edmonton
London N9 9TU

020 8807 2656
office@westleaschool.co.uk
www.westleaschool.co.uk

Continuing the path to extraordinary

It's been more than a year since Ofsted inspected and said we continue to be an outstanding school. In the spirit of our innovation value, we've not sat still.

In September 2023, we started work towards a three-year school development plan. As we approach the end of our first year of implementation, it seems timely to share an update with you.



Flourishing Environments

We have three big projects running for three years that are grouped under a 'Flourishing Environments' theme. These will move us towards our goal of creating a culture in which everyone can flourish. Each year, we pick different activities to deliver under the projects.

EXTENDING SERVANT LEADERSHIP

Because we believe in a people-first approach.

We continue to improve and innovate our leadership practice. This year, our executive team met one-to-one with 100 team members to get feedback on our culture. Everyone's opinion counts as we bring our 'magic formula' to life by putting our people first.



SUPPORTING PEOPLE TO LEARN & DEVELOP

Because we want our people to flourish.

Team members have meaningful objectives which are designed to improve their practice.

We held 144 upskilling sessions throughout the year. The key theme was meeting learners' individual needs with a focus on supporting communication.

We also introduced new career pathways. Team members became Student Pastoral Mentors, Forest School Practitioners, and Senior Medical Leads. We have 12 people on apprenticeships.

ADAPTING TO MEET LEARNER NEEDS

Because everyone should feel they belong.

We created a new Head of Pastoral Development role. Cath Goodwin took the helm in developing a cohesive service.

We joined up our approach to Relationships & Behaviour and Teaching & Learning. We wrote 250 Personalisation Profiles: individual plans that help us to meet each learner's unique needs.

We partnered with the charity Voice 21 to train Oracy Champions, who have been helping learners to communicate in lessons and social settings.

Pathways For All

Our second batch of projects sit under a theme of 'Pathways For All.' These three projects are about creating meaningful opportunities for our people and learners, and ensuring that no one gets left behind.

BRINGING PERSONAL DEVELOPMENT TO LIFE

Because we have high aspirations for all.

We improved the Life & Work curriculum across all campuses. We broadened it at Key Stage 5 by adding Hospitality & Catering to expand careers opportunities.

We organised 707 trips and residentials as part of our improved Enrichment Programme. Each learner went out on average 17 times in the year.

Family members attended assemblies, concerts, and celebration ceremonies. Together, we recognised the accomplishments and independence skills of our young people.

DELIVERING THE FULL STUDENT EXPERIENCE

Because we believe every learner can flourish.

We added two new vocational options at Key Stages 4 and 5. A Hospitality & Catering qualification and a Childcare, Health & Social Care course.

379 learners took part in a combined 33 new and improved career taster sessions. These give students a chance to explore what they might like to do in the future.

We launched a high-needs internship programme. 12 young people completed the programme. 10 are on target to get jobs or volunteering opportunities.

DEVELOPING THE EMPLOYEE LIFECYCLE

Because we want to be a great place to work.

We improved the way we recruit to find people who share our values.

We onboarded 75 new starters and provided more structured support during their first 20 weeks to help them flourish.





Meridian Campus

In this final edition, I'd like to share some of the many highlights of the year at Meridian Campus.

We introduced Forest School and the children have loved their weekly lesson. Forest School gives learners the opportunity to explore the natural environment. They also build life skills as they learn outdoors.

Our campus shop "Westco" has had a successful year of business. Everyone enjoyed making items to sell in Creative and Life & Work lessons. They used communication boards and Makaton to talk to the shop keepers. This helped them to develop their communication skills and learn how to manage money.

I'd like to say a big thank you to parents and carers for supporting us with our sensory approaches to learning. There has been a lot of 'getting messy,' which is always a popular way to learn.



I am also proud of the support you have given us at our campus events across the year. We've had brilliant concerts where we've shared learning from across the campus. I've been proud of the children for how well they managed to perform to an audience.



I'd also like to thank our staff for the dedication and kindness they show to help our children flourish every day.

That brings us to the all-important Graduation time.

The Reception children have had a great year learning the routines and structure of a school day. They are now ready to #TakeOff to Key Stage 1.

Our year 4 children are graduating from Dyson's Road. We know they will have so much fun at our Springfield site with the swings, trampolines and soft play.

We are also celebrating our year 6 children as they prepare to leave Meridian Campus. We are so proud of everything they have achieved and wish them the best of luck at secondary school. We know they will have a great time #FlyingHigh at Haselbury Campus.

Finally, I want to thank all our families, campus friends and partners for your support across the year. We wish you a good summer and can't wait to see you again on Tuesday 3rd September.



EMMA DRIVER
Head of School





Haselbury Campus

As the school year draws to a close, we are proud to note the progress every one of our learners has made. It has been a busy year with many trips, visits and activities.



None of this is possible without the whole West Lea community pulling together. I would like to thank all staff, parents and carers for the support you have given over the year.

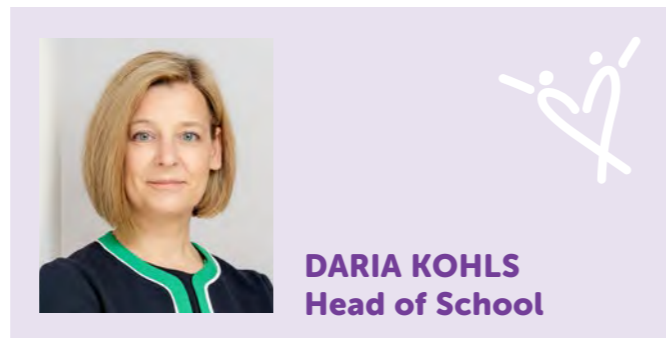
This time of year is bittersweet as we say goodbye to our Year 9 Class of 2024. We wish them well as they move on to the next Key Stage. Thank you to everyone who joined us for the Year 9 Graduation to say farewell. It was a wonderful celebration filled with joy, laughter and tears. We're honoured to have played a part in your child's educational journey. And we hope they will take with them many fond memories of their time at Haselbury Campus.

As we look to the next academic year, we're delighted to welcome our new Year 7 cohort and their families. We are looking forward to seeing you all back in September. We wish everyone an enjoyable and restful summer. Hopefully, we will see some sunshine!

We started the academic year with team building at Lambourne End. Autumn term also saw everyone having fun celebrating Halloween at the fancy-dress disco. In National Science Week, learners designed fun toys from recycled materials. And, as the weather got better in spring, we enjoyed trips to local parks, the seaside and London attractions.



We rounded off the year with Sports Day and the Creative show where learners showcased their many talents. Throughout the year, everyone has been busy in the kitchen under the guidance of 'Bread and Butter.'



DARIA KOHLS
Head of School





Learning for Life Campus

I would like to thank parents and carers for the support you've given me during my first year as Head of School. It's been a fantastic year and an amazing adventure for us all.

Notable highlights include our year 11s undertaking work experience for the first time. And the year 10s meeting employers at football stadiums and Paradise Wildlife Park.



We continued to grow our enrichment programme. Visits from Chickenshed Theatre, the Enfield Choir Service, and Everybody Loves Music have been great fun.

As the year draws to a close, we've been recognising the many achievements of our year 11s. Our final farewell was our Graduation Assembly. We rewarded learners for their maturity and the skills they developed. Guided by their Passports, they've worked hard towards the Preparing for Adulthood targets.



The year 11 Prom is always a beautiful evening. Members of the public remarked on our learners' manners and exemplary behaviour. And, as ever, their outfits and dance skills blew us away.

We ended the year on a high, with 34 year 11s going to Barcelona or Paris. We visited many sights in Barcelona, including the Mercat de la Boqueria and the Barcelona Stadium. Our adventurers in Paris enjoyed the Eiffel Tower, Disneyland Paris, and a very yummy chocolate factory.





Horizon Campus

How time flies!

I can't quite believe this is our final newsletter of the school year. It's been an action-packed one.

We welcomed more than 80 new learners to Horizon Campus in September. We've also continued to work with many existing students.



It's been an absolute pleasure watching them learn and grow since joining us. We've seen lots of progress in lessons, at work and in students' personal development. I've been hearing from proud staff about their wonderful achievements.

On the last day of term, each of our classes were able to reflect on their accomplishments. We held a Celebration and Leavers Assembly for Key Stage 5 students. Our Pre-Interns enjoyed a class celebration to mark their last day. They talked about moving on to an internship next year. The Supported Interns gathered for an end of year social. They reflected on their year with staff and classmates.

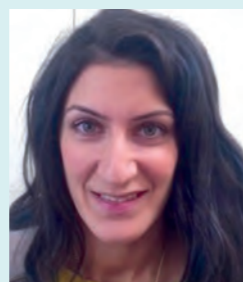
We've been very focused on supporting students and interns throughout the year.



We've also been working hard to prepare for the big move to our new Ponders End site in September.

I'd like to thank the students for working so hard and challenging themselves to do their best. I'm grateful to their families for working in partnership with us. I'd also like to thank our dedicated staff for working tirelessly to bring our No Limits vision to life. They've built great relationships with students, which helps to bring out the best in everyone.

As we close for the summer, I wish you a restful break. I look forward to starting the next school year at our new site. It's an exciting time as we expand our offer to students and build more opportunities for them to learn and grow.



KIKA CHARALAMBOUS
Head of School



2023-24 Community news roundup

The West Lea community extends to the Enterprise Cooperative Trust (ECT) and Learning for Life Charity (LFLC). As we look back on the year's activities, we've chosen some highlights to share.



First, we wish to remember James Kelly, our beloved Horizon Campus English teacher, who passed away in March.



West Lea parents attend a meeting with LFLC to hear about the Life in the Community project. Feedback was positive.



ECT meets with Enfield North MP, Feryal Clark, to discuss how its work can improve life opportunities for young people across the borough.



Bishop Stopford, an Enfield-based Christian school, joins ECT.

West Lea features in Teach Primary magazine. We talk about the importance of a whole-school approach to mental health and wellbeing. And explain how we work together so everyone can flourish.



Local employers open their doors to help West Lea mark National Careers Week. Learners attend talks and visit London skyscrapers, city offices, theatres and fire stations.



West Lea takes possession of a fully refurbished building in Ponders End, thanks to a £6m investment from London Borough of Enfield. We're looking forward to opening our doors to Horizon Campus' Key Stage 5 learners in September. The building includes a fully equipped ICT and media suite, bespoke therapy spaces, and a commercial training kitchen.

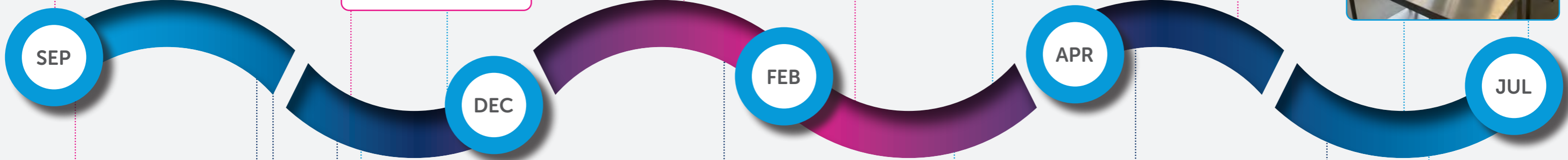


ECT partner Laurel Park School celebrates their new name. They welcome learners from Palmers Green and Southgate.

ECT partner Chickenshed makes national headlines. Jenny, Jimmy and Alex tell Sky News how the brilliant work of the theatre has helped change their lives.



Students from ECT partner school Laurel Park visit Enfield Council Chamber. They meet the mayor of Enfield, local councillors and council officers.

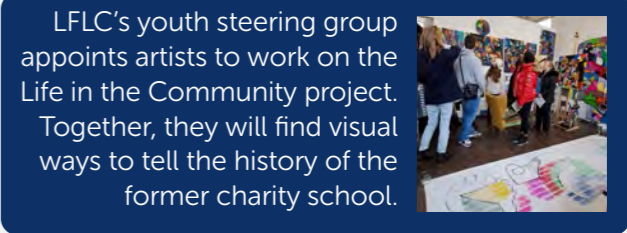


Orchardside School joins ECT. The school serves pupils aged 11 to 16 who have found mainstream school challenging. It helps them to re-engage with their learning.



West Lea hosts its inaugural Supported Internship Gala Awards at Millfield Theatre. We recognise the accomplishments of past and present interns and thank employer partners.

West Lea features in Education Today magazine. We talk about our 'magic formula' of putting people first so they can lead by example and give their best.



LFLC's youth steering group appoints artists to work on the Life in the Community project. Together, they will find visual ways to tell the history of the former charity school.

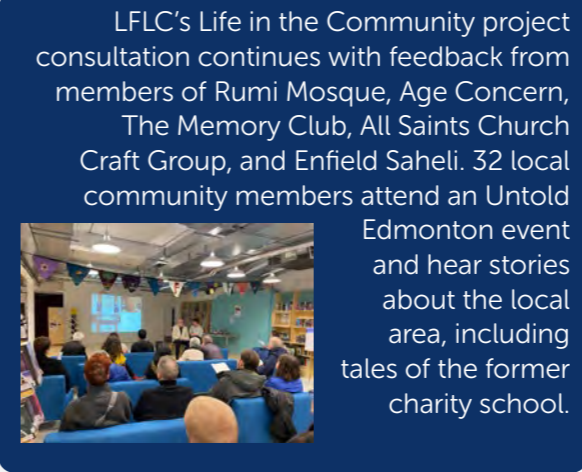
LFLC sets up a youth steering group as part of its Life in the Community project. The students will support plans to regenerate the historic building in Edmonton Green.

Rapport, a provider of guest services and valued West Lea employer partner, raises £4,000 for LFLC.

23 members of the local community come to a public consultation for LFLC's Life in the Community project. They respond positively to the design proposals.



LFLC charity shops, Life on the Green and Life in the Town, report increased footfall. 4 local volunteers gain work experience in the shops and 1 secures paid employment. 4 more volunteers make a difference by picking up donations in the charity van.



LFLC's Life in the Community project consultation continues with feedback from members of Rumi Mosque, Age Concern, The Memory Club, All Saints Church Craft Group, and Enfield Saheli. 32 local community members attend an Untold Edmonton event and hear stories about the local area, including tales of the former charity school.

14 West Lea students take part in LFLC's Baking & Barista extended learning project. 20 gain work experience in the charity's shops. And 11 gain experience in the All Works of Life professional print and design shop. LFLC job coaches support 8 early careers professionals in their workplace with Access to Work funding.

Pastoral update

IT TAKES A VILLAGE

The saying, 'It takes a village to raise a child,' aligns beautifully with our pastoral work. In this final newsletter of the year, I thought I'd provide a round-up of the team and their activities.

Firstly, I'd like to thank Maggie Lawlor from the Children's Society. She provided funding for parent and carer therapies, including massages.



**Zuhre Omer,
Parent Support Advisor**

Zuhre continued to run coffee mornings and classes for parents and carers. She also linked up with Enfield's Early Help Hub, which provides activities, advice and support for families.



**Gill Koch,
Medical and Welfare Lead**

Gill restructured our medical team and recruited three new Senior Welfare Leads. We welcome Chelsea Cigie, Janice Miles-Sinyinza and Lorraine Di Pino, who join Kirsty Parker. We're committed to developing an excellent service at each campus.



**Kathryn White,
Attendance Lead**

Kathryn met with learners and their families to remove barriers to attendance. She is always on hand to offer advice and helps with referrals to external partners. For example, Cheviots and the Enfield Advisory Service for Autism (EASA).

In my first year as Head of the Pastoral Development team, I look back with pride at what we've achieved in the West Lea 'village'. I'm excited about the possibilities which lay ahead next year.

Cath Goodwin



**Jeanette Fuster,
Safeguarding Officer**

Jeanette supported families with Team Around The Family meetings. She also signposted parents and carers to local services. For example, Enfield Early Help and Family Based Solutions.



**Tori Tripp,
Pastoral Development Manager**

Tori has supported families of children experiencing anxiety or low mood. She helped parents and carers enlist the support of CAMHS and other agencies. And assisted learners in getting autism and ADHD diagnoses. Tori is happy to discuss any concerns about your child's mental health and wellbeing.

HELPFUL LINKS FOR FAMILY SUPPORT

Enfield Early Help Hub

<https://enfielddirectory4all.co.uk/>

Youth and Family Hubs

<https://www.enfield.gov.uk/services/children-and-education/youth-and-family-hubs>

Enfield Advisory Service for Autism

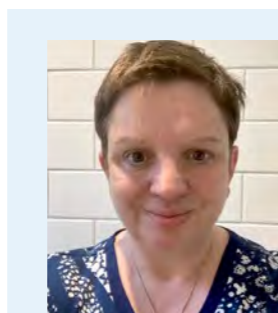
<https://enfielddasa.org.uk>

Cheviots Children's Disability Service

<https://www.enfield.gov.uk/services/children-and-education/local-offer/joint-service-for-disabled-children-jsdc/cheviots-childrens-disability-service>

Family Based Solutions

<https://familybasedsolutions.org.uk>



**CATH GOODWIN
Head of Pastoral
Development**



Our campuses



West Lea
MERIDIAN CAMPUS

Dysons Road
174 Dysons Road, Edmonton,
London, N18 2DS

Springfield Road
Springfield Road,
New Southgate,
N11 1SP




West Lea
HASELBURY CAMPUS

Haselbury Campus
Haselbury Road, Edmonton,
London, N9 9TU




West Lea
LEARNING FOR LIFE CAMPUS

Laurel Park School
Wilmer Way,
N14 7HY




West Lea
HORIZON CAMPUS

St Mary's
Lawrence Road, Edmonton,
London, N18 2HN

FROM SEPT 2024
New KS5 Campus
219-221 High Street,
Ponders End, Enfield,
EN3 4DX



Key term dates 2024-25

AUTUMN TERM 2024

Monday 2nd September
INSET Day – School closed to learners

Tuesday 3rd September
Year 1 to Year 11 learners return to school

Thursday 5th September
Year 12, 13 and Pre-Interns return to school

Monday 9th September
Interns start school

Wednesday 9th October
INSET Day – School closed to learners

Wednesday 23rd October
Parent and Carer Progress Review
School closes at 12.30

Monday 28th October to Friday 1st November
Half Term Break – School closed to learners

Monday 4th November
Learners return to school

Friday 29th November and
Monday 2nd December
INSET Day – School closed to learners

Friday 20th December
Last day of Autumn Term

Monday 23rd December to
Friday 3rd January 2025
Christmas Break – School closed to learners

SPRING TERM 2025

Monday 6th January 2025
INSET Day – School closed to learners

Tuesday 7th January
First day of Spring Term – Learners return to school

Wednesday 12th February
Parent and Carer Progress Review
School closes at 12.30pm

Monday 17th February to Friday 21st February
Half Term – School closed to learners

Monday 24th February
Learners return to school

Friday 4th April
Last day of Spring Term

Monday 7th April to Friday 18th April
Easter Break – School closed to learners

SUMMER TERM 2025

Monday 21st April
Bank Holiday

Tuesday 22nd April
First day of Summer Term – Learners return to school

Monday 5th May
Bank Holiday

Monday 26th May to Friday 30th May
Half Term – School closed to learners

Monday 2nd June
Learners return to school

Wednesday 18th June
Parent and Carer End of Year Review
School closes at 12.30pm

Friday 11th July
Last day of Summer Term for Year 11 and Horizon learners

Tuesday 22nd July
Last day of Summer Term for Reception to Year 10 learners



community
kindness
learning for life
innovation **inclusion**